

TABLE OF CONTENTS

| | |
|---|-------------------------|
| Low Vision Magnifiers | 3,14,15,16,17,28 |
| Measuring Microscope | 20,22 |
| Monoculars | 21 |
| Professional Medical & Dental Loupes | 10,11 |
| Recumbent/Bed TV Glasses | 28 |
| Magnifiers | |
| Bar Magnifier | 4 |
| Bright Field Dome Type | 4 |
| Clip-On, Spectacle | 9 |
| Computer Video Magnifier | 22 |
| Desk Loupes | 21 |
| Dental Loupes | 10,11 |
| Electronic Magnifier..... | 12,13 |
| Embroidery | 7 |
| Eye Glass (Jewelers) | 20 |
| Fresnel Lens (Sheet magnifiers) | 21 |
| Gooseneck | 7 |
| Hand Held | 2,3,5,14,15,16 |
| Head Loupes & Inspection | 8,9,10,11,13 |
| High Powered Magnifiers | 3,5,6,14,15,16,17 |
| Illuminated LED Magnifiers..... | 2,3,5,6,7,8,15,16,17,22 |
| Linen Testers | 21 |
| Loupes | 20,21 |
| Mirrors, Magnifying | 23 |
| Peak Loupes | 20 |
| Pocket Folding | 6 |
| Measuring Illuminated Microscopes | 20 |
| Prismatic Specs | 23 |
| Rectangular | 2,3,7,14,15,16,17 |
| Rimless Handheld, Illuminated | 2 |
| SeeTv, Binocular spectacles | 24 |
| Spec Mags | 8,9 |
| Stand Magnifiers | 3,7 |
| Stereo Viewers..... | 19 |
| Schweizer Hand Held Aspheric | 14 |
| Schweizer Hand Held LED | 15,16 |
| Schweizer LED Stand/Torch | 17 |
| Torch Magnifiers | 17 |
| TV/Computer | 22 |
| Watchmakers Eye Glass | 20 |
| Make-Up & Folding Glasses | 26,27 |
| Ready Reading Glasses | 25,26,27 |
| Stick-on Bifocal Flat top segs | 18 |
| Stick-on Prisms - 3M Fresnel | 19 |
| Stick-on Aspheric Spheres - 3M Fresnell | 19 |
| Sun Readers | 27 |

Handy Formula and Conversion Table Inside Backcover

HAND MAGNIFIERS

Relationship table on page # 27
Dioptres(D)/ Times(X)/ Focal distance

- ◆ *Traditional style*
- ◆ *Optical grade light weight acrylic lenses*
- ◆ *Visomed high quality hand held magnifiers*
- ◆ *Ezi grip handle*

| | |
|--------|------------------------------------|
| MZV50 | Visomed, clear frame, 4X, 50mm |
| MZV60 | Visomed, clear frame, 3X, 60mm |
| MZV80 | Visomed, clear frame, 2.5X, 80mm |
| MZ100 | Visomed, clear frame, 2X, 100mm |
| MZ100R | Visomed, clear frame, 2X, 50x100mm |



LED RIMLESS RANGE

- ◆ *Excellent light*
- ◆ *Long life - 1000 hours*
- ◆ *Comfortable handle*

| | |
|--------|--------------------------------------|
| MZRL11 | LED illuminated, rimless 2X, 110mm |
| MZRL90 | LED illuminated, rimless 2X, 90mm |
| MZRL75 | LED illuminated, rimless 2X, 75mm |
| MZRL85 | LED illuminated, rimless 2X, 85x50mm |



RUBBERIZED HANDLE

| | |
|--------|---|
| MZ7833 | LED illuminated, 6 diodes, 3X70mm, 6X , 20D, high power “spot”, rubberised handle |
|--------|---|



RECTANGULAR HAND HELD

MZ75100

LED stand magnifier, 2.8X, 110X30mm,
Includes USB charging cable.

MZ6701

Folding handle, 2X/4X high power "spot",
100x50mm



COIL ATMAX LVA MAGNIFIER

- ◆ **Larger field of view**
- ◆ **Improved LED illumination**
- ◆ **Touch control on/off**

| | |
|-------------|--------------------------|
| MZATMAX3 | 3X, 83X59mm, Bi-aspheric |
| MZATMAX5 | 5X, 60mm, Aspheric |
| MZATMAX7 | 7X, 57mm, Aspheric |
| MZATMAX SET | Set of 3 in display case |



LED ILLUMINATED HAND MAGNIFIERS

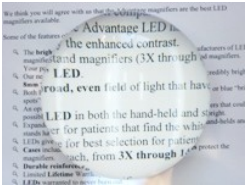
- ◆ **Aspheric lenses**
- ◆ **Scratch resistant coatings**
- ◆ **Very suited to low vision**

| | |
|--------|-------------------------------------|
| MZ7811 | LED illuminated 4X, 12D, 50mm lens |
| MZ7812 | LED illuminated 7X, 14D, 50mm lens |
| MZ7813 | LED illuminated 8X, 28D, 35mm lens |
| MZ7814 | LED illuminated 10X, 36D, 35mm lens |
| MZ7815 | LED illuminated 12X, 12D, 30mm lens |
| MZ7816 | LED illuminated 14X, 12D, 30mm lens |



DOME MAGNIFIERS (Bright field)

- ◆ *Concentrates ambient light*
- ◆ *Useful low vision aid*
- ◆ *Light weight acrylic*



| | |
|--------|--|
| MZ6910 | Dome Magnifier, 95mmØ, 3X, hand polished |
| MZ6911 | Dome Magnifier, 80mmØ, 3X, hand polished |
| MZ6912 | Dome Magnifier, 65mmØ, 3X, hand polished |
| MZ6913 | Dome Magnifier, economy, 60mmØ, 3X |
| MZ6914 | Dome Magnifier, economy, 75mmØ, 3X |
| MZ5001 | LED illuminated dome, USB charge, 90mm, 5X |

NEW



BAR MAGNIFIERS

- ◆ *Guide line for ease of use*

| | |
|---------|-------------------------------|
| MZ1008 | Bar Magnifier, 125mm long, 2X |
| MZ1008L | Bar Magnifier, 160mm long, 2X |



SLIDING POCKET MAGNIFIERS

- ◆ LED auto switch illuminated
- ◆ LED life is 3,000 hours continual use

| | |
|--------|-------------------------------|
| MZ7821 | 2.5X, 40x35mm , 6D, white LED |
| MZ7822 | 4X, 40x35mm , 12D, white LED |
| MZ7823 | 6X, 40x35mm , 20D, white LED |



THE ORIGINAL SLIDER

- ◆ Rubberised grip, non slip
- ◆ Excellent light contrast
- ◆ LED Life 2,500 hours

| | |
|---------|---|
| MZLW7R | 3X, 40x45mm, 10D |
| MZLWSET | Set of 12 LED Sliding Magnifiers with display stand |



POCKET FOLDING MAGNIFIERS

- ♦ *Excellent lens protection*
- ♦ *Branding available*

| | |
|---------|--|
| MZ7541L | 3.5X 55x53mm diameter, leather protector |
|---------|--|

| | |
|--------|-----------------------------------|
| MZ7171 | Aspheric , 4X, 35mm diameter, 10D |
|--------|-----------------------------------|

| | |
|--------|-----------------------------------|
| MZ7172 | Aspheric , 6X, 35mm diameter, 20D |
|--------|-----------------------------------|

| | |
|--------|-----------------------------------|
| MZ7173 | Aspheric , 8X, 35mm diameter, 28D |
|--------|-----------------------------------|

| | |
|--------|------------------------------------|
| MZ7174 | Aspheric , 10X, 35mm diameter, 35D |
|--------|------------------------------------|



QUALITY POCKET FOLDING MAGNIFIERS

- ♦ *Quality loupes for professional field work and general inspection*
- ♦ *All triplet magnifiers include a leather*

| | |
|--------|--|
| MZ7534 | Acrylic dual folding lens, 4,6,10X, 20mm |
|--------|--|

| | |
|--------|--------------------------|
| MZ2732 | Glass doublet, 10X, 21mm |
|--------|--------------------------|

| | |
|---------|--|
| MZ2732M | <i>Pro Series</i> Glass triplet, 10X, 21mm |
|---------|--|

| | |
|-----------|---|
| MZ2732LED | <i>Pro Series</i> LED illuminated, triplet, 10X, 21mm |
|-----------|---|

| | |
|--------|--|
| MZ2734 | <i>Pro Series</i> Glass triplet, 20X, 20.5mm |
|--------|--|

| | |
|---------|---|
| MZ2732T | Glass triplet, dual lens, 10X, 18mm & 20X, 12mm |
|---------|---|



STAND MAGNIFIERS

- ◆ *Ideal for hobbies*
- ◆ *Hands free*

| | |
|---------|--|
| MZ7721 | Trestle stand magnifier, PMMA, 2X, 100x140mm |
| MZ3657R | Gooseneck magnifier, 2X, 100x140mm Heavy cast iron base |
| CS21908 | Gooseneck, with clamp option, 2X, 90mm |
| CS21909 | Gooseneck, with clamp option, 2X, 110mm |



ILLUMINATED GOOSENECK

- ◆ *LED illuminated clamp magnifier*



| | |
|---------|-----------------------------------|
| CS22286 | 1.75X, 174x108mm, LED illuminated |
|---------|-----------------------------------|

HANDS FREE EMBROIDERY MAGNIFIERS

- ◆ *Convenient hands free viewing aids*
- ◆ *Adjustable straps*

| | |
|---------|--|
| MZ9800 | Embroidery, 115mm, 1.5X/4.25X |
| MZ9800L | LED Embroidery, 115mm, 1.5X/4.25X |
| MZ9800R | <i>Deluxe</i> embroidery, 130X100mm, 1.75X |



HEAD MOUNTED MAGNIFIERS

- ◆ *Comfortable viewing*
- ◆ *LED illuminated*
- ◆ *Interchangeable lenses*



| | |
|---------|---|
| MZ9892B | LED illuminated, 5 interchangeable lenses: 1.0X, 1.5X, 2.0X, 2.5X, 3.5X |
| MZ7501 | Adjustable head band, LED illuminated 4 interchangeable lenses: 1.2X, 1.8X, 2.5X, 3.5X |
| MZCX... | Magni-Focuser with adjustable head band, available in: 1.50X, 1.75X, 2.00X, 2.25X, 2.75X, 3.50X, Made in the USA - professional |



Relationship table on page # 27
Dioptres(D)/ Times(X)/ Focal distance

PROFESSIONAL MAGNI-SPECS

- ◆ *Comfortable viewing*
- ◆ *Ideal for beauty therapists and electrolysis.*
- ◆ *Made in the USA*

| | |
|----------|--|
| CXMS.... | Magni-specs available in: 1.50X, 1.75X, 2.25X, 2.75X, 3.50X, |
|----------|--|



SPECTACLE CLIP-ONS

- ◆ *Light weight*
- ◆ *Flip-up*

| | |
|---------|---------------------------------------|
| MZHF20 | 1.5X binocular magnifier |
| MZHF20A | 2.0X binocular magnifier |
| MZHF20B | 2.5X binocular magnifier |
| MZHF20C | 3.0X binocular magnifier |
| MZHF20S | Box set with 4 interchangeable lenses |



SPECTACLE CLIP-ONS, FLIP-UP HALF EYE

- ◆ *Light weight*
- ◆ *Flip-up*
- ◆ *With case*

| | |
|----------|---------------------------|
| UR229610 | +1.00D, clip-on magnifier |
| UR229615 | +1.50D, clip-on magnifier |
| UR229620 | +2.00D, clip-on magnifier |
| UR229625 | +2.50D, clip-on magnifier |
| UR229630 | +3.00D, clip-on magnifier |
| UR229635 | +3.50D, clip-on magnifier |
| UR229640 | +4.00D, clip-on magnifier |



HEAD MOUNTED SPECTACLES

- ◆ *Convenient hands free viewing aids*
- ◆ *Individual eye piece adjustable*

| | |
|-------|-----------------------------------|
| MZ229 | 2.8X binocular magnifier. FOV 12° |
|-------|-----------------------------------|



PROFFESIONAL SURGICAL LOUPES

- ♦ *Surgical, dental & veterinary quality*
- ♦ *A range of options available*
- ♦ *Fully coated high definition optics*
- ♦ *Fit over spectacle frames*



N31 VARIABLE WORKING DISTANCE

A versatile loupe with an accommodating working distance. Adjustable lenses for correct Pupillary distance. The patented hinge system can be fully adjusted to suit most working positions. Light weight. Prescription lens insert available.

| Model | Magnification | Working distance | Field of vision | Weight | Barrel Dia. |
|---------|---------------|------------------|-----------------|--------|-------------|
| MZN3125 | 2.5X | 300-580mm | 125mm | 30g | 22mm |
| MZN3133 | 3.3X | 300-580mm | 125mm | 33g | 22mm |

NP VARIABLE WORKING DISTANCE

A versatile loupe with an accommodating working distance. Adjustable lenses for correct Pupillary distance. The patented hinge system can be fully adjusted to suit most working positions. Light weight. Prescription lens insert available.



| Model | Magnification | Working distance | Field of vision | Weight | Depth of vision |
|---------|---------------|------------------|-----------------|--------|-----------------|
| MZNP125 | 2.5X | 340-550mm | 120mm | 46g | 60-80mm |
| MZNP225 | 2.5X | 340-550mm | 100mm | 34g | 60-80mm |
| MZNP3 | 3.0X | 340-550mm | 90mm | 44g | 60-80mm |
| MZNP35 | 3.5X | 340-550mm | 80mm | 42g | 60-80mm |

VARIABLE POWER LOUPES

*Not sure what magnification you require?
The new Z10/Z11 have variable magnification in one loupe!*



| Model | Magnification | Working distance | Field of vision | Depth of vision |
|---------|---------------|------------------|-----------------|-----------------|
| MZZ1025 | 2.5X-3.0X | 480mm | 120mm | 100mm |
| MZZ103 | 3.0X-3.5X | 360mm | 120mm | 100mm |

HIGH POWER PRISMATIC LOUPES

These prismatic flip-up style loupes provide the ideal blend of a wide viewing area with a high magnification.



| Model | Magnification | Working distance | Field of vision | Weight | Depth of vision |
|-------|---------------|------------------|-----------------|--------|-----------------|
| MZTP4 | 4.0X | 330-550mm | 60mm | 76g | 60mm |
| MZTP5 | 5.0X | 330-550mm | 60mm | 76g | 60mm |
| MZTP3 | 6.0X | 330-550mm | 40mm | 86g | 60mm |

ACCESSORIES



TAMZPI Prescription insert for surgical loupes



Removable LED illuminator

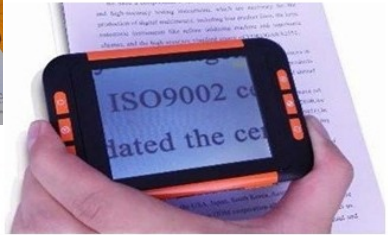
ELECTRONIC MAGNIFIERS

A-MAX 3.5"

- ◆ 3.5-inch LCD screen
- ◆ 2X-30X zoom
- ◆ Ultra light weight, 105g
- ◆ 3 hour continuous use
- ◆ Rechargeable batteries
- ◆ Transformer included



Product No: MZEM035



Full specification sheet available in pdf format - www.magnifiers.nz/uploads

I-VIEW 3.5"

- ◆ 3.5-inch TFT, LCD screen
- ◆ 2X-16X zoom
- ◆ Light weight, 150g
- ◆ 4 hour continuous use
- ◆ Multi function (8 modes)
- ◆ Rechargeable batteries
- ◆ Transformer included



Product No: MZIVIEW35

Full specification sheet available in pdf format - www.magnifiers.nz/uploads

I-VIEW 4.3"

- ◆ 4.3-inch widescreen LCD
- ◆ 3X-20X zoom
- ◆ Light weight, 160g
- ◆ 4 hour continuous use
- ◆ Multi function (10 modes)
- ◆ Rechargeable batteries
- ◆ Transformer included



Product No: MZIVIEW43

Full specification sheet available in pdf format - www.magnifiers.nz/uploads

I-VIEW 5.5" Touch Screen

- ◆ 5-inch widescreen LCD
- ◆ 2.2X-25X zoom
- ◆ Flip-out handle
- ◆ Light weight, 230g
- ◆ 4 hour continuous use
- ◆ Multi function
- ◆ High definition



Full specification sheet available in pdf format - www.magnifiers.nz/uploads

I-VIEW 7"

- ◆ 7-inch ISP LCD screen
- ◆ 2.3X-19X zoom
- ◆ 12 high contrast colour modes
- ◆ 5 M pixel camera
- ◆ 5 hour continuous use
- ◆ Total weight, 440g
- ◆ High definition
- ◆ Colour modes

Product No: MZIVEW7



Full specification sheet available in pdf format - www.magnifiers.nz/uploads

ELECTRONIC TV MAGNIFIER

- ◆ Easily connects to a TV screen
- ◆ 20X-70X magnification range
- ◆ Screen freeze capture
- ◆ Wireless model available



| | |
|----------|----------------------------|
| MZETV | Wired model |
| MZETVW | Wireless model |
| MZETVUSB | USB connector for computer |



Full specification sheet available in pdf format - www.magnifiers.nz/uploads

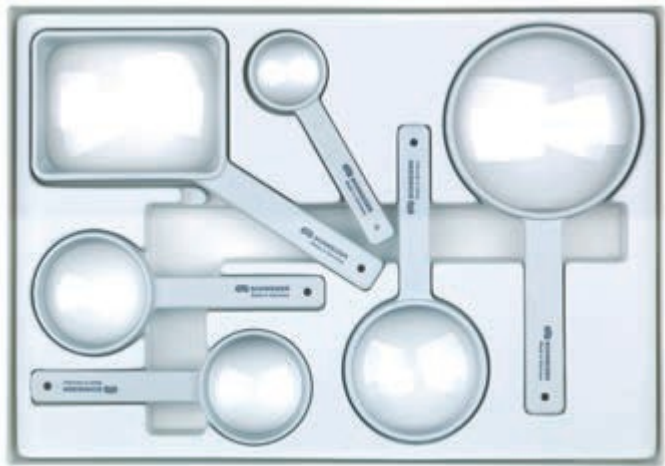
SCHWEIZER ASPHERIC HAND HELD

- ◆ *Hand held high powered*
- ◆ *Loop in handle for lanyard or cord*
- ◆ *Aspheric light weight lenses*
- ◆ *Best quality. Made in Germany*

About Schweizer:

- Made in Germany
- Best quality products
- 10 year guarantee
- 70 years experience
- Worldwide network

www.schweizer-optik.de



Classic set: SZ210502

| | |
|----------|-------------------------------------|
| SZ831702 | Hand held, 100x75mm, 8D, 3X |
| SZ835502 | Hand held, 57mm round, 20D, 6X |
| SZ836002 | Hand held, 60mm round, 16D, 5X |
| SZ837002 | Hand held, 70mm round, 12D, 4X |
| SZ833502 | Hand held, 35mm round, 28D, 8X |
| SZ833902 | Hand held, 35mm round, 39D, 10.75X |
| SZ210502 | Display set of the above magnifiers |



SCHWEIZER LED ILLUMINATED

ERGO-Lux MP mobil

- ◆ *Easy-to-feel boost switch*
- ◆ *Ergonomic design and soft touch zone for extra grip*
- ◆ *Low energy consumption and standard battery replacement*
- ◆ *Aspheric light weight lenses*
- ◆ *High contrast, even spread of light*
- ◆ *Supplied with a microfibre pouch for lens protection & cleaning*



Ergo-Lux lower power set SZ164012 (+)



Ergo-Lux high power set SZ164022 (*)

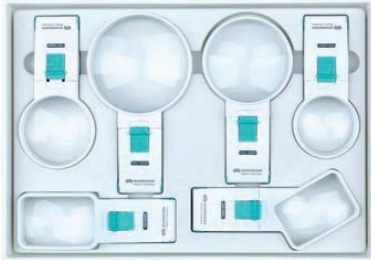
| | |
|----------|-----------------------------------|
| SZ164082 | 100x75mm, 8D, 3X, white LED, + |
| SZ164102 | 75x50mm, 10D, 3.6X, white LED, +, |
| SZ164122 | 70mm, 12D, 4X, white LED, * |
| SZ164162 | 60mm, 16D, 5X, white LED, * |
| SZ164202 | 55mm, 20D, 6X, white LED, * |
| SZ164242 | 55mm, 24D, 7X, white LED, + |
| SZ164282 | 35mm, 28D, 8X, white LED, * |
| SZ164392 | 35mm, 39D, 10.75X, white LED |
| SZ164562 | 35mm, 56D, 15X, white LED |
| SZ164062 | 100mm, 6D, 2.5X, white LED, + |
| SZ164132 | 35mm, 12D, 4X, white LED, + |
| SZ164092 | 85mm, 8D, 3X, white LED, + |
| SZ164172 | 35mm, 16D, 5X, white LED, * |



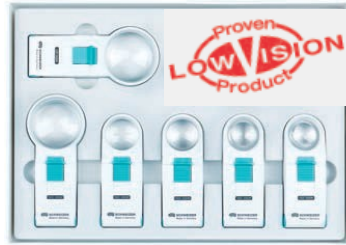
SCHWEIZER LED ILLUMINATED

OKOLUX plus mobil

- ♦ *Very bright, consistent and high contrast light through the special light emitting diode*
- ♦ *Low energy consumption and standard battery replacement*
- ♦ *Aspheric light weight lenses*
- ♦ *Supplied with a microfibre pouch for lens protection & cleaning*



Okolux plus LED lower power display set
SZ134092 (+)



Okolux plus LED high power display set
SZ134022 (*)

| | |
|----------|---|
| SZ134102 | 75x50mm angled, 10D, 3.5X, white LED, + |
| SZ134112 | 75x50mm, 10D, 3.5X, white LED, + |
| SZ134122 | 70mm, 12D, 4X, white LED, + |
| SZ134132 | 35mm, 12D, 4X, white LED, |
| SZ134162 | 60mm, 16D, 5X, white LED, + |
| SZ134172 | 35mm, 16D, 5X, white LED |
| SZ134202 | 55mm, 20D, 6X, white LED, + * |
| SZ134282 | 35mm, 28D, 8X, white LED, + * |
| SZ134802 | 85mm, 8D, 3X, white LED |
| SZ134062 | 100 mm, 6D, 2.5X, white LED |
| SZ134562 | 35mm, 56D, 15X, white LED, * |
| SZ134482 | 35mm, 48D, 13X, white LED, * |
| SZ134392 | 35mm, 39D, 10.75X, white LED, * |
| SZ134242 | 55mm, 24D, 7X, white LED, * |



SCHWEIZER LED ILLUMINATED STAND/TORCH

OKOLUX plus

- ◆ ***Ideal illumination of reading material***
- ◆ ***Very bright, consistent and high contrast light through the special light emitting diode***
- ◆ ***Low energy consumption and standard battery replacement***
- ◆ ***Aspheric light weight lenses***
- ◆ ***Order the head & handle separately***



Okolux plus LED lower power display set
SZ144092(+)



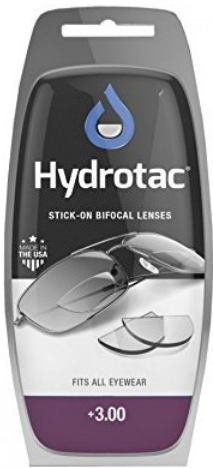
Okolux plus LED high power display set
SZ144292 (*)

| | |
|----------|--|
| SZ140082 | Okolux Plus Head, 100x75mm, 8D, 3X, + |
| SZ140122 | Okolux Plus Head, 70mm, 12D, 4X, + |
| SZ140162 | Okolux Plus Head, 60mm, 16D, 5X, + |
| SZ140202 | Okolux Plus Head, 55mm, 20D, 6X, + |
| SZ140242 | Okolux Plus Head, 55mm, 24D, 7X |
| SZ140282 | Okolux Plus Head, 35mm, 28D, 8X, * |
| SZ140392 | Okolux Plus Head, 35mm, 39D, 10.75X, * |
| SZ140482 | Okolux Plus Head, 35mm, 48D, 13X, * |
| SZ140562 | Okolux Plus Head, 35mm, 56D, 15X, * |
| SZ142002 | 2700 K, Yellow LED, Handle for 140xxx |
| SZ144002 | 4500 K, White LED Handle for 140xxx |
| SZ164002 | 6500 K, Blue LED, Handle for 140xxx |



STICK-ON FLAT TOP BIFOCAL SEGS

- ◆ *Sticks to any glass or plastic lens hydrostatically*
- ◆ *Stays on, even when wet*
- ◆ *Removable and reusable*
- ◆ *Can be cut to fit shape*
- ◆ *Very easy to apply*
- ◆ *Ideal for: Diving masks, safety goggles, sunglasses, hobby specs, swim goggles*
- ◆ *Two sizes:*
Diving: 40mm wide - 20mm deep D-seg
Regular: 30mm D-seg

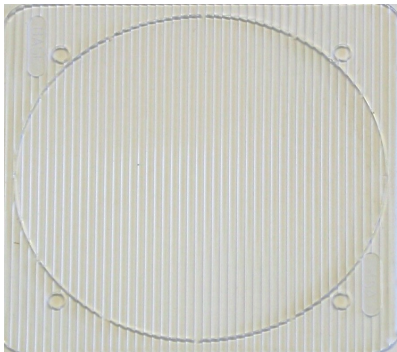


| Regular | Code | Diving | Code |
|---------|---------|--------|------------|
| +1.25D | OPTX125 | +1.00D | OPTXDIV100 |
| +1.50D | OPTX150 | +1.25D | OPTXDIV125 |
| +1.75D | OPTX175 | +1.50D | OPTXDIV150 |
| +2.00D | OPTX200 | +1.75D | OPTXDIV175 |
| +2.50D | OPTX250 | +2.00D | OPTXDIV200 |
| +3.00D | OPTX300 | +2.25D | OPTXDIV225 |
| | | +2.50D | OPTXDIV250 |
| | | +2.75D | OPTXDIV275 |
| | | +3.00D | OPTXDIV300 |
| | | | |



3M STICK-ON PRISMS & ASPHERIC SPHERES

- ◆ *Instructions available at: www.eyeline.co.nz/catalogues*
- ◆ *65mm diameter*



| POWERS | |
|--|---|
| SIPR...D 1 ^Δ , 2 ^Δ , 3 ^Δ , 4 ^Δ , 5 ^Δ , 6 ^Δ , 7 ^Δ , 8 ^Δ , 9 ^Δ , 10 ^Δ , 12 ^Δ , 15 ^Δ , 20 ^Δ , 25 ^Δ , 30 ^Δ , 35 ^Δ , 40 ^Δ | SIAP+... +0.50D, +1D, +1.5D, +2D, +2.5D, +3D, +3.5D, +4D, +5D, +6D, +7D, +8D, +10D, +12D, +14D, +16D |

PEAK STEREO VIEWER

- ◆ *For aerial, topographical photo & maps to give 3D effect*
- ◆ *Includes protective pouch*
- ◆ *Adjustable pupillary distance .45-75mm*
- ◆ *32mm lenses*
- ◆ *Solid metal frame for professional use*

| | |
|-------|--------------------------|
| MZSV2 | 2X, 118x56x124mm, 227gms |
| MZSV4 | 4X, 118x56x82mm, 216gms |



MEASURING LOUPES

- ♦ *Professional quality*
- ♦ *A range of scales available*
- ♦ *Adjustable focus*

| | |
|--------|----------------------------|
| MZ1975 | 7X, 25mm |
| MZ2986 | 10X, 25mm |
| MZ6804 | 10X, 30mm, LED illuminated |



JEWELLERS EYE LOUPES

- ♦ *Light weight*
- ♦ *Handy pocket size*
- ♦ *A range of industry applications*

| | |
|--------|---------------------|
| MZ8005 | PMMA lens, 5X, 29mm |
| MZ8007 | PMMA lens, 7X, 29mm |
| MZ8008 | 5X/12X, 16mm/23mm |



PORTABLE MEASURING MICROSCOPES

- ♦ *Precision optics*
- ♦ *Aluminium body*
- ♦ *LED illumination*

| | |
|--------|-----|
| MZ7504 | 20X |
| MZ7505 | 40X |
| MZ7506 | 60X |
| MZ7507 | 80X |



CLOSE FOCUS MONOCULARS

- ◆ *Multi coated lenses*
- ◆ *Wrist strap*
- ◆ *Leatherette case & dust cover*

| | |
|--------|--------------------------------|
| MZM412 | 4X, 12mm, with case and straps |
| MZM616 | 6X, 16mm, with case and straps |
| MZM821 | 8X, 21mm, with case and straps |



DESK LOUPES

- ◆ *Handy fixed focus inspection magnifiers*
- ◆ *Linen testers include metric and imperial scale*

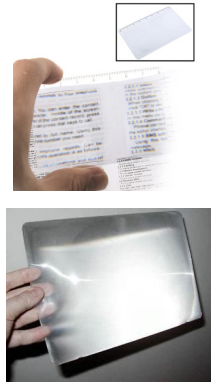
| | |
|--------|--|
| MZ9622 | Desk loupe, 8X, 30mm |
| MZ2801 | Metal linen tester, 6X, 30mm, single lens |
| MZ3300 | Metal linen tester, 6X, 25mm, double lens |
| MZ1588 | Metal linen tester, 10X, 15mm, double lens |



FRESNEL LENS

- ◆ *Light weight Fresnel lens magnifiers*

| | |
|-------|--|
| MZ300 | Credit card size hard Fresnel lens, 85x55mm , 3X |
| MZ605 | A4 size Fresnel lens sheet, 262mm x 181mm, 1.8X |



CELESTRON ELECTRONIC MAGNIFIER

- ♦ *2.4" LCD screen*
- ♦ *54X zoom*
- ♦ *3 MP camera*
- ♦ *USB connect*
- ♦ *128 MB internal flash memory*

NEW



MZCEM Up to 54X zoom

DIGITAL PHOTOGRAPHY MAGNIFIER

- ♦ *Photo/video capture direct to PC*
- ♦ *25X-600X zoom*
- ♦ *1.3MP camera sensor*
- ♦ *USB connect*
- ♦ *Software included*

MZS04 25X-600X zoom



NEW

EYELINE
OPTICAL

Toll free: 0508 11 44 77
enquiries@eyeline.co.nz
www.eyeline.co.nz

MIRROR MAGNIFIER

- ◆ *Attaches to a mirror by suction clip*
- ◆ *Excellent for make-up and contact lenses*
- ◆ *Ideal for travelling*

MZMM

2X, 130mm



PRISMATIC SPECTACLES

- ◆ *Light weight*
- ◆ *Multi coated*
- ◆ *High quality optical glass*
- ◆ *Ideal for close inspections*

| | |
|---------|---------------------------------|
| MZPR4 | Diopter +4D |
| MZPR6 | Diopter +6D |
| MZPR8 | Diopter +8D |
| MZPR10 | Diopter +10D |
| MZPR12 | Diopter +12D |
| MZPRSET | Test set of the above dioptries |



HANDS-FREE GLASSES FOR INTERMEDIATE & DISTANCE VIEWING



Maximize the size of TV screens with the easiest-to-fit, binocular, telescopic distance system. These hands-free, head-mounted glasses provide 2.2X magnification AND can be adjusted to focus $\pm 3.00D$. The system is adaptable for most users with low vision.

MaxTV glasses will focus on objects from distances of 10 feet (3 meters) to infinity, and are perfect for watching TV, sporting events, movies, theatre, bird watching, or any other distance viewing activity in which a magnified image would be helpful.

With flexible temples, the SeeTV telescopic glasses are a comfortable television viewing device.

♦ ***Includes a hard case, spec-cord and a microfibre cloth***

MZMAXTV

Hands-free, binocular 2.2X specs, separate eye focus

EYELINE
OPTICAL

Toll free: 0508 11 44 77
enquiries@eyeline.co.nz
www.eyeline.co.nz

CLASSIC HALF EYE READY READERS

- ◆ *Flex hinges*
- ◆ *Soft case*
- ◆ *Lens size 50x 25mm, bridge 18mm*



BS7471..

Metal ready readers in : gunmetal, red & blue , 50-18 eye,
+1.00, +1.25, +1.50, +1.75, +2.00, +2.25, +2.50, +2.75, +3.00, +3.50D's

HIGH POWER READY READERS

- ◆ *Soft case*
- ◆ *Hard coated*

MZHP..

Metal ready readers in: Gold, 48-19 eye
+4.00, +4.50, +5.00D's



SEMI RIMLESS READER

- ◆ *Flex hinges*
- ◆ *Hard tube case*
- ◆ *Lens size 46x20mm, bridge 18mm*



BS7472..

Semi rimless readers in : gunmetal, blue & silver, 46-18 eye,
+1.00, +1.50, +2.00, +2.50, +3.00D's

HALF EYE WINDSOR BRIDGE

- ♦ *Hard tube case*



BS7404..

Metal half eye with Windsor bridge : silver, gold, blue & black
+1.00, +1.50, +2.00, +2.50, +3.00D's

FOLDING READY READERS

- ♦ *With folding or telescopic temples.*
- ♦ *With soft case*

BS74460..

Silver folding reader, with soft case
+1.00, +1.50, +2.00, +2.50, +3.00D's

BS74461..

Gunmetal folding reader, with soft case
+1.00, +1.50, +2.00, +2.50, +3.00D's

BS74450..

Black/silver telescopic temples & flex hinge,
+1.00, +1.50, +2.00, +2.50, +3.00D's



MAKE-UP GLASSES

- ♦ *Polycarbonate or Metal frame*
- ♦ *Soft case*



BS7401..

Plastic make-up glasses, with single swinging lens
+2.00, +2.50, +3.00, +3.50, +4.00D's

CS1419..

Metal make-up glasses with case and mini screwdriver
+2.00, +2.50, +3.00D's, Glazeable also available.



EYELINE
OPTICAL

Toll free: 0508 11 44 77
enquiries@eyeline.co.nz
www.eyeline.co.nz

COMPUTER SPECTACLES - +0.50D & +0.75D

- ◆ *Spring hinge*
- ◆ *Key hole bridge*



MZCS...

Plastic computer spectacles in: Black/tortoise, Amber/black, Black, Tortoise +0.50D and +0.75D

MAGNETIC CLIP READY READERS

- ◆ *Strong magnet at bridge*
- ◆ *Hard coated*
- ◆ *Hangs around the neck*



MZMC..

Plastic magnetic clip readers in : black, brown & grey , 51-25eye, +1.00, +1.50, +2.00, +2.50, +3.00, +3.50, +4.00D's

SUNREADERS

- ◆ *Retro Tortoise shell or dark grey with 'neckholder' temples*
- ◆ *With soft case*



BS7476..

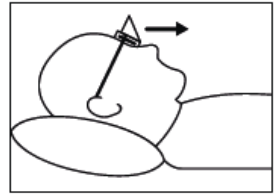
Retro tortoise shell sun reader, brown lens 70-75% tint, +1.00, +1.50, +2.00, +2.50, +3.00D's

CS6396..

Dark grey 'neckholder' temples, grey lenses, +1.50, +2.00, +2.50D's

RECUMBENT PRISMATIC SPECS

- ♦ *For spinal/neck problems*
- ♦ *With soft case*



BS4397 20

Recumbent prismatic specs for spinal/neck problems, black, standard



BS4397 22

Recumbent prismatic specs for spinal/neck problems, black, light design



BS4397 21

Recumbent prismatic fit-over specs for spinal/neck problems, black, wide temples to block-out side lights and air movement.

